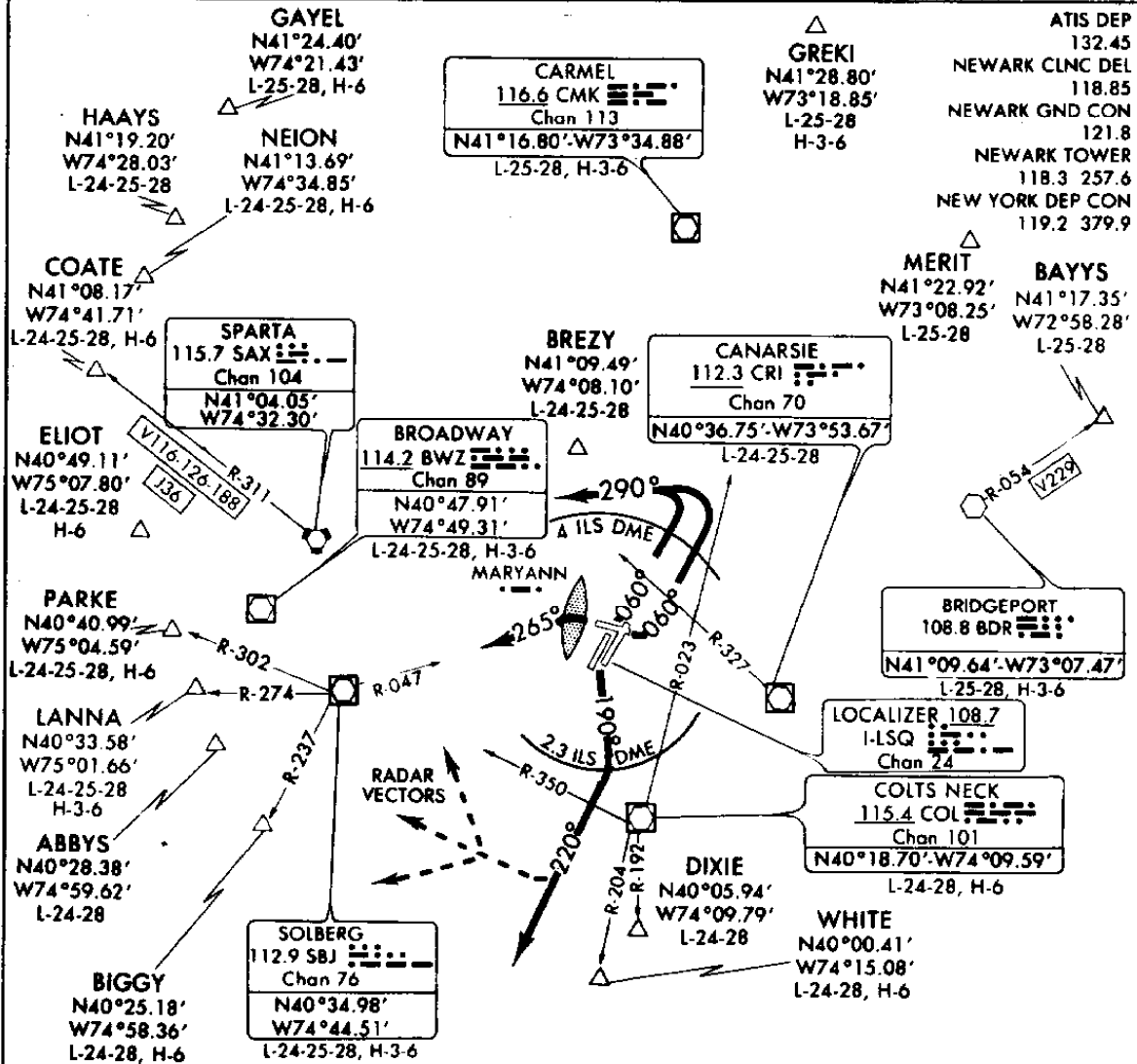


# NEWARK SIX DEPARTURE (VECTOR)

NEWARK INTL (EWR)  
NEWARK, NEW JERSEY



NOTE: Maryann Fan Marker is 1875 feet outbound from departure end and 46.5' north of runway centerline.

NOTE: Take-off Runway 11, obstruction 1742' high, 6.5 miles east of departure end of runway.

NOTE: WHITE/DIXIE departures expect vectors to COL R-350. Thence WHITE via COL R-204 or DIXIE COL R-192.

NOTE: COATE departures expect vectors via SAX/SAX R-311.

NOTE: BAYYS departures expect vectors via BDR/BDR R-054.

NOTE: Runway 22L/R departures westbound expect radar vectors between 5 and 8 nautical miles.

NOTE: Rwy 22L/R PARKE departures expect radar vectors via SBJ/SBJ R-302.

NOTE: Rwy 22L/R LANNA departures expect radar vectors via SBJ/SBJ R-274.

NOTE: Rwy 22L/R BIGGY departures expect radar vectors via SBJ/SBJ R-237.

NOTE: Chart not to scale.

(NARRATIVE ON FOLLOWING PAGE)

## NEWARK SIX DEPARTURE (VECTOR)

NEWARK, NEW JERSEY  
NEWARK INTL (EWR)

# NEWARK SIX DEPARTURE (VECTOR)

NEWARK INTL (EWR)  
NEWARK, NEW JERSEY

## DEPARTURE ROUTE DESCRIPTION

TAKE-OFF RUNWAY 4L/R: Climb on heading 060°, upon crossing 4 NM DME on Runway 4R ILS (use 4L DME only if 4R DME is not available), turn left heading 290° maintain 2500 feet. Thence. . . .

TAKE-OFF RUNWAY 11: Turn left heading 060° (do not proceed east of COL R-023). Upon crossing the 4 NM DME on Runway 4R ILS (use 4L DME only if 4R DME is not available), turn left heading 290° maintain 2500 feet. Thence. . . .

TAKE-OFF RUNWAY 22L/R: Turn left, climb on heading 190°, upon crossing 2.3 NM DME on Runway 22 ILS, turn right heading 220° maintain 5000 feet. Thence. . .

TAKE-OFF RUNWAY 29: Runway heading to Maryann Fan Marker, climb 265°, maintain 5000 feet. Thence. . . .

. . . . via vector or assigned route/fix. Expect clearance to filed altitude/flight level ten minutes after departure.

LOST COMMUNICATIONS: For aircraft via COATE, NEION, HAAYS, GAYEL, BREZY, if radio contact lost/not established with ATC, climb to 3000 feet after SBJ R-047.